

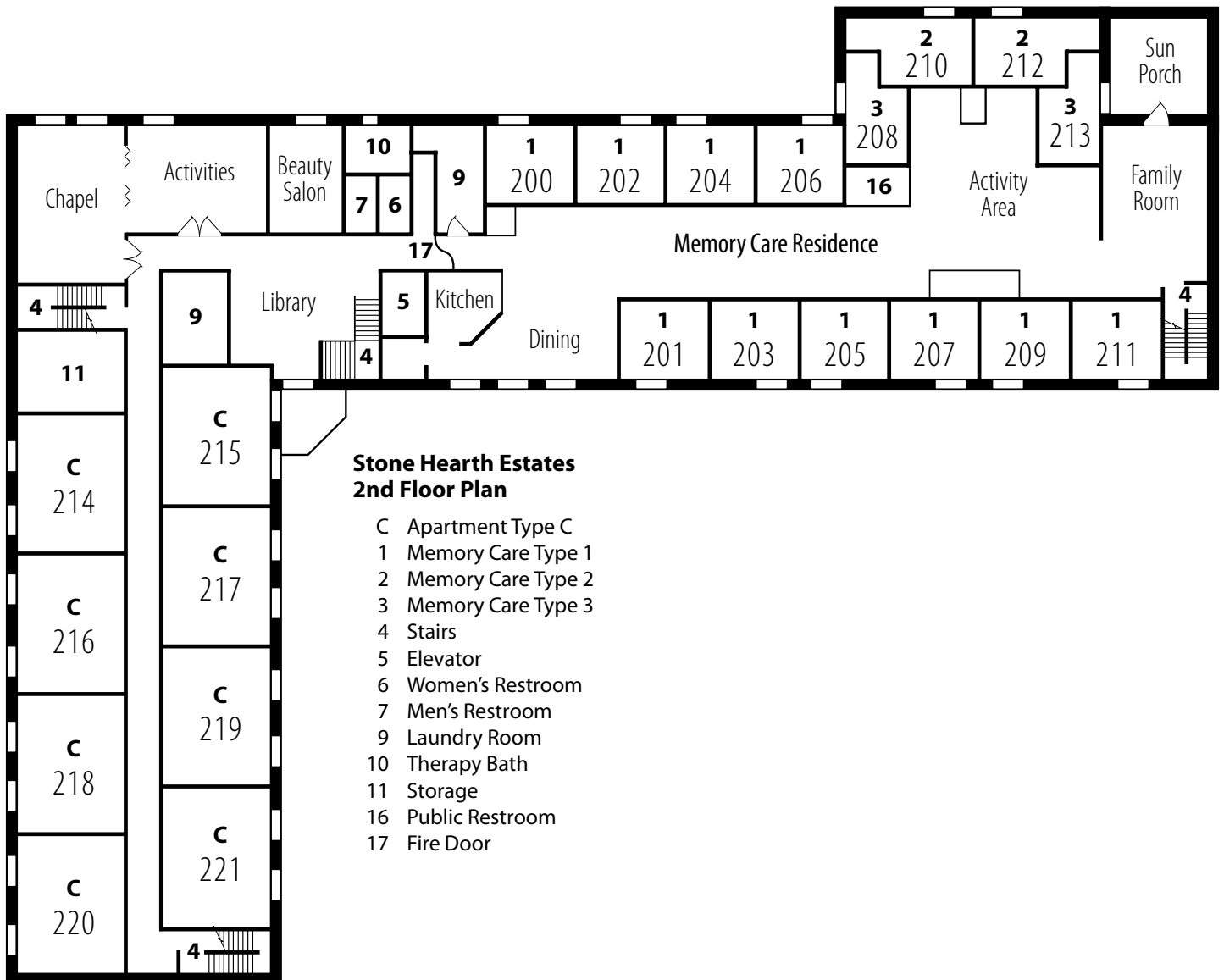
**Stone Hearth Estates  
1st Floor Plan**

- A Suite Type A
- B Suite Type B
- 1 Receptionist
- 2 Administration
- 4 Stairs
- 5 Elevator
- 6 Women's Restroom
- 7 Men's Restroom
- 8 Housekeeping
- 9 Laundry Room
- 10 Therapy Bath
- 11 Storage
- 12 Mechanical room
- 13 Fireplace
- 14 Patio
- 15 Portico



Stone Hearth Estates provides housing and services to qualified individuals without regard to race, sex, age, national origin, religion or disability.





Stone Hearth Estates provides housing and services to qualified individuals without regard to race, sex, age, national origin, religion or disability.

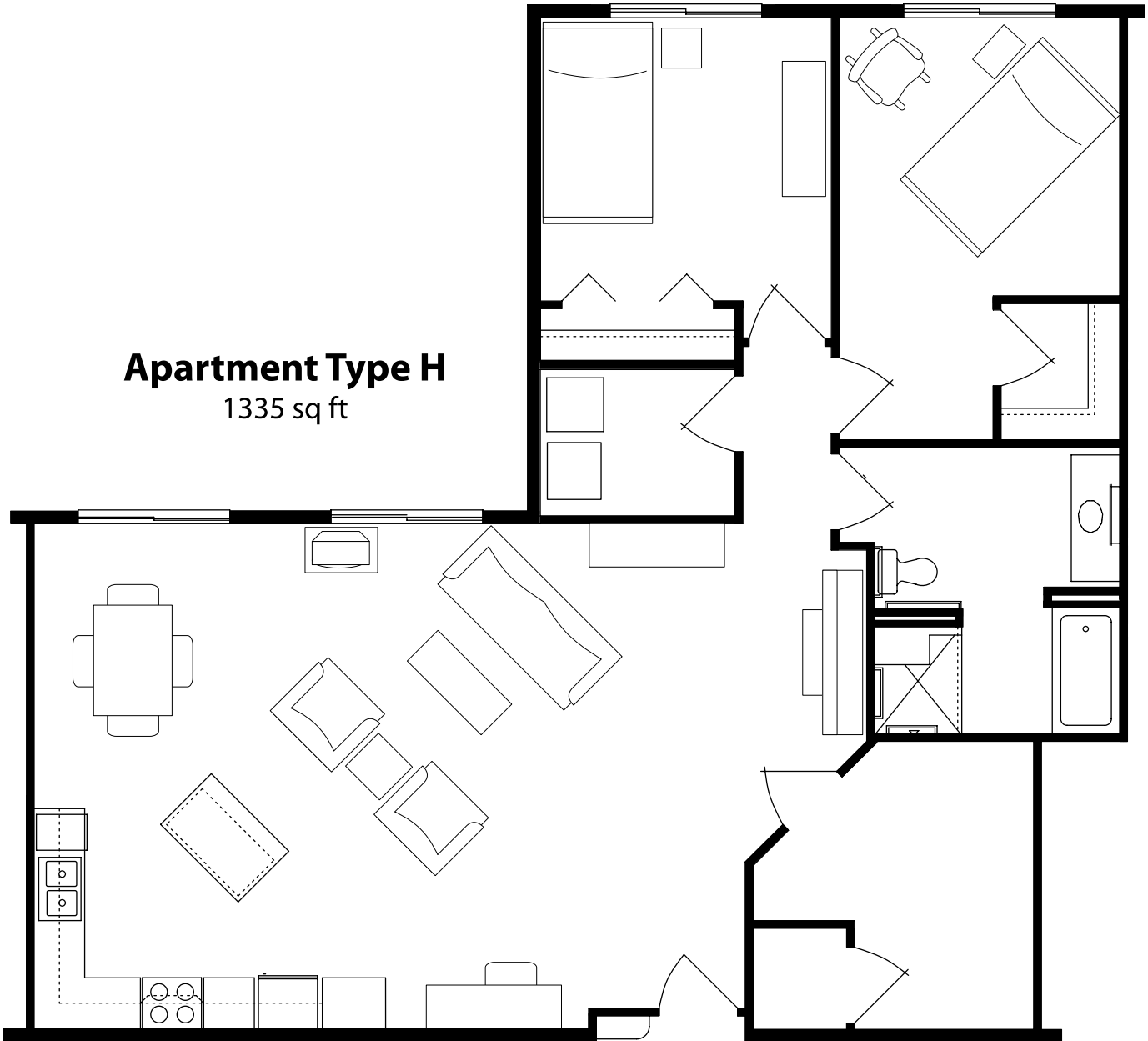




Stone Hearth Estates provides housing and services to qualified individuals without regard to race, sex, age, national origin, religion or disability.



**Apartment Type H**  
1335 sq ft

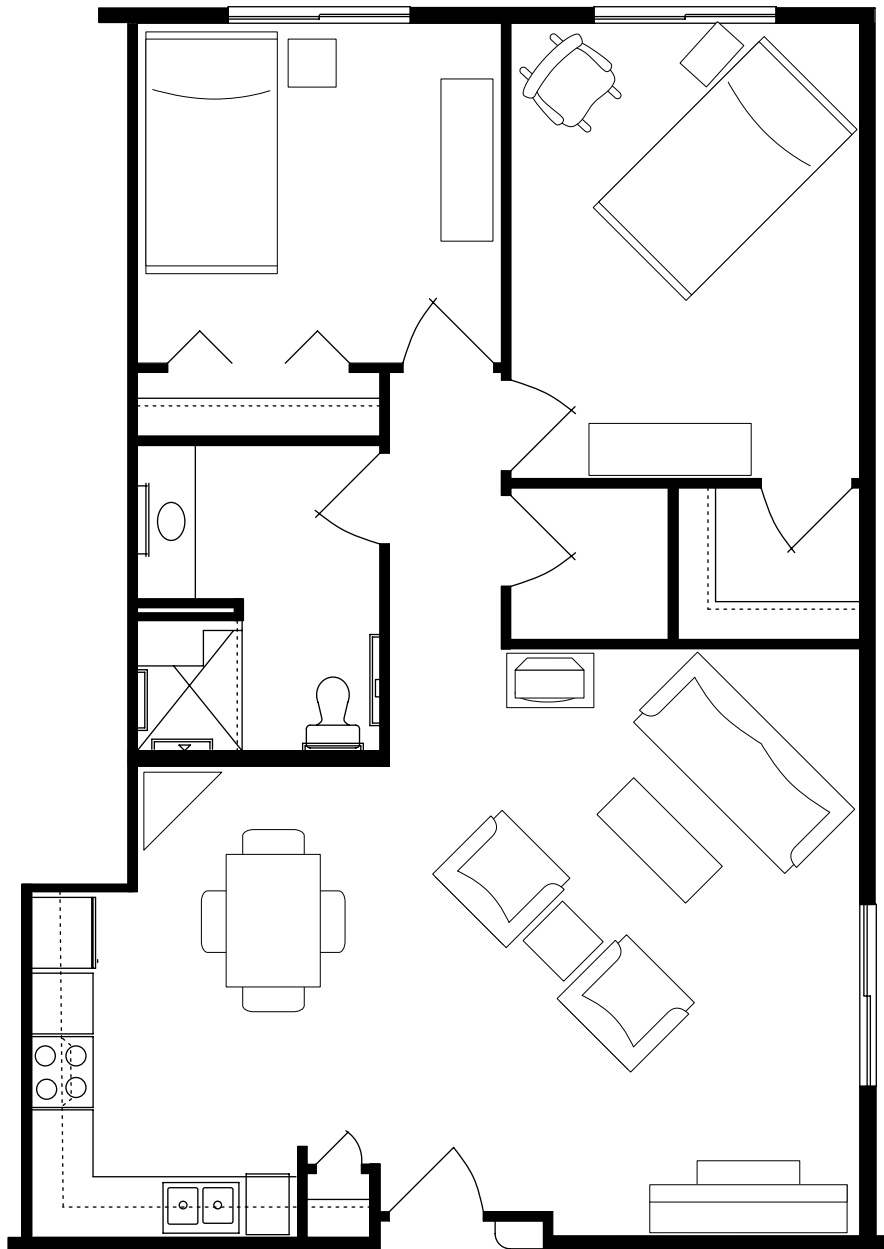


Stone Hearth Estates provides housing and services to qualified individuals without regard to race, sex, age, national origin, religion or disability.



### Apartment Type G

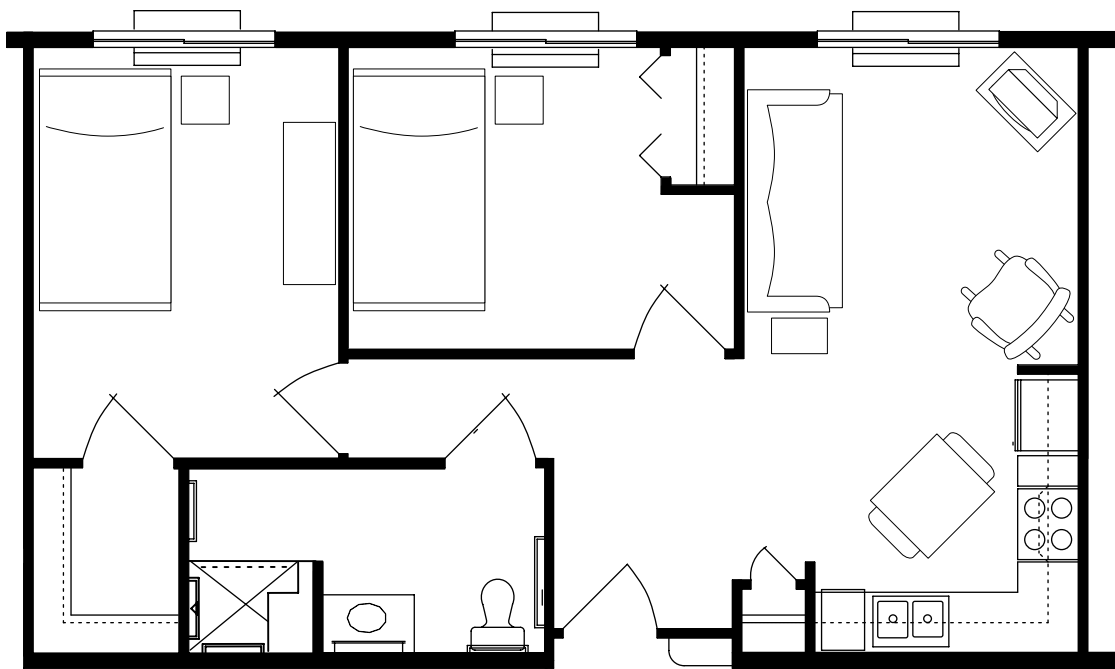
1042 sq ft



Stone Hearth Estates provides housing and services to qualified individuals without regard to race, sex, age, national origin, religion or disability.



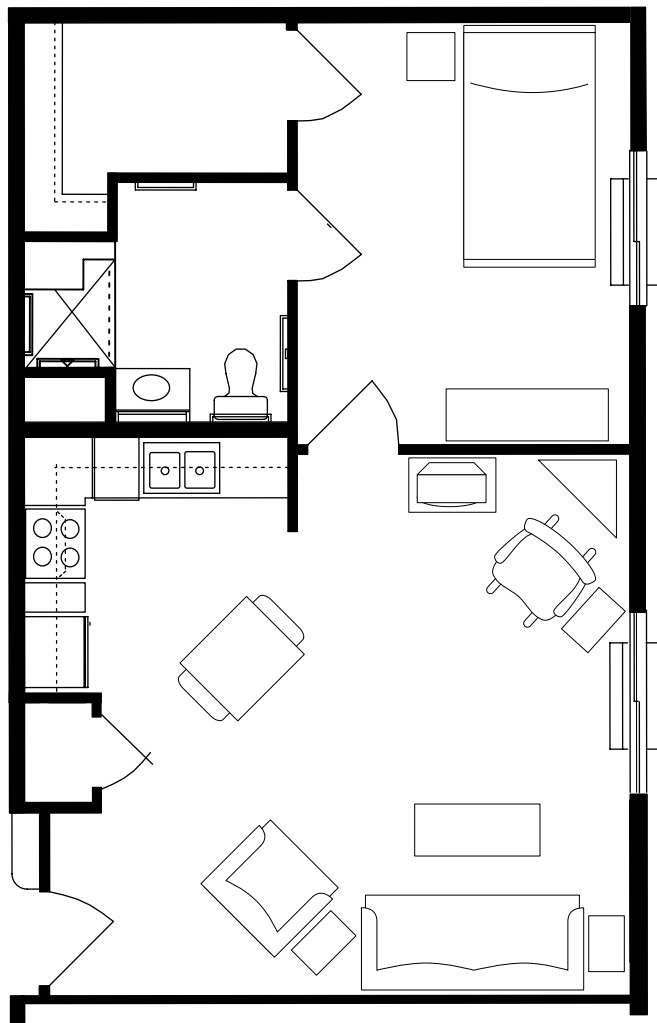
### Apartment Type F 728 sq ft



Stone Hearth Estates provides housing and services to qualified individuals without regard to race, sex, age, national origin, religion or disability.



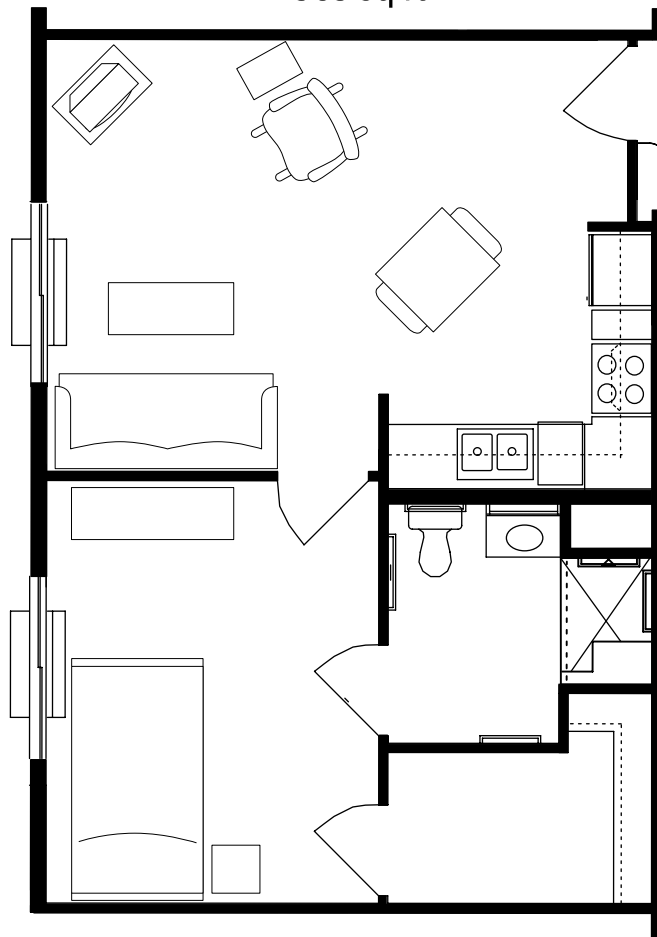
### Apartment Type E 672 sq ft



Stone Hearth Estates provides housing and services to qualified individuals without regard to race, sex, age, national origin, religion or disability.



### Apartment Type D 583 sq ft



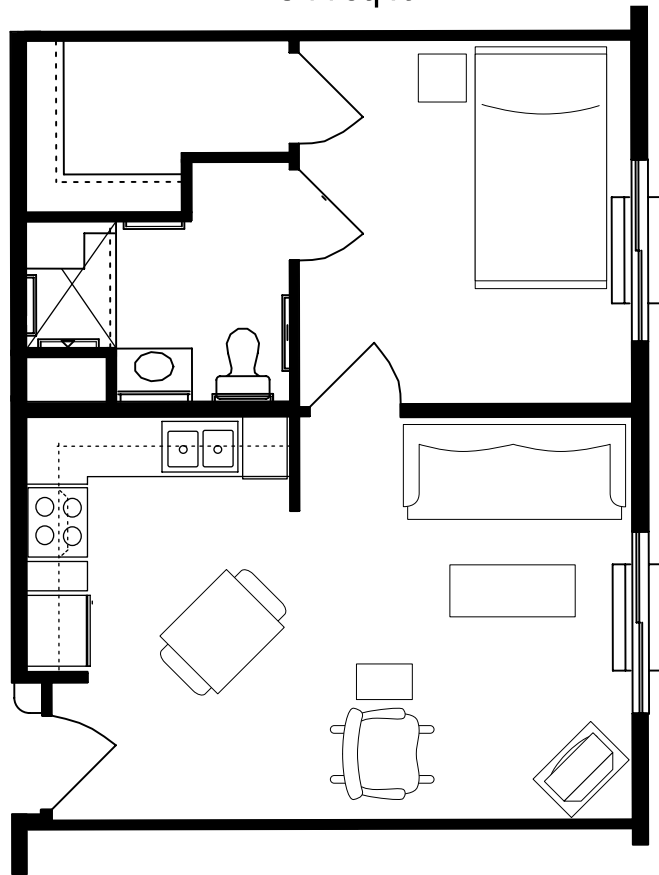
Stone Hearth Estates provides housing and services to qualified individuals without regard to race, sex, age, national origin, religion or disability.





### Apartment Type C

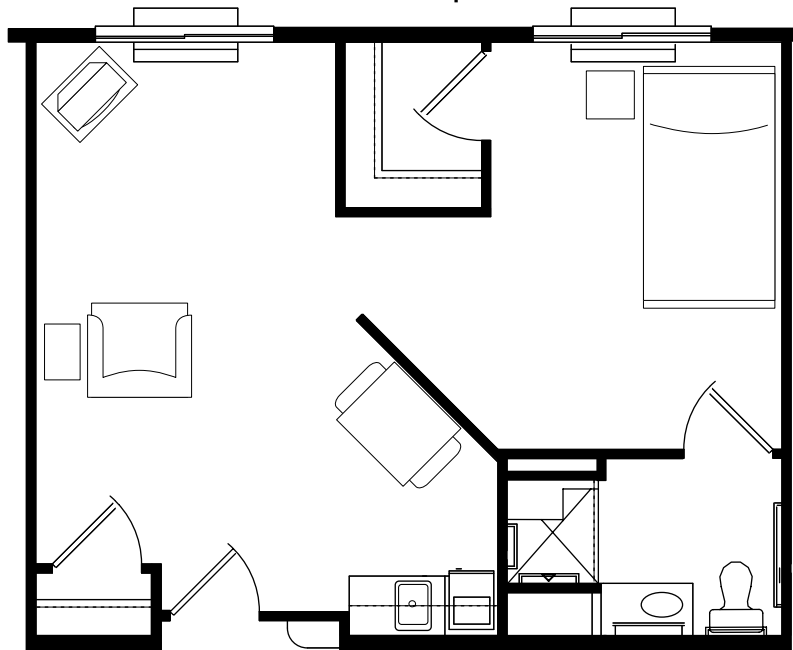
544 sq ft



Stone Hearth Estates provides housing and services to qualified individuals without regard to race, sex, age, national origin, religion or disability.



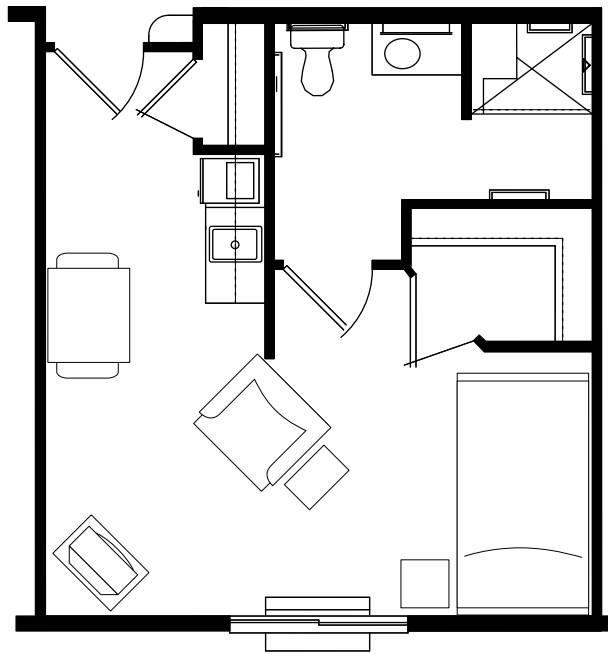
**Suite Type B**  
532 sq ft



Stone Hearth Estates provides housing and services to qualified individuals without regard to race, sex, age, national origin, religion or disability.



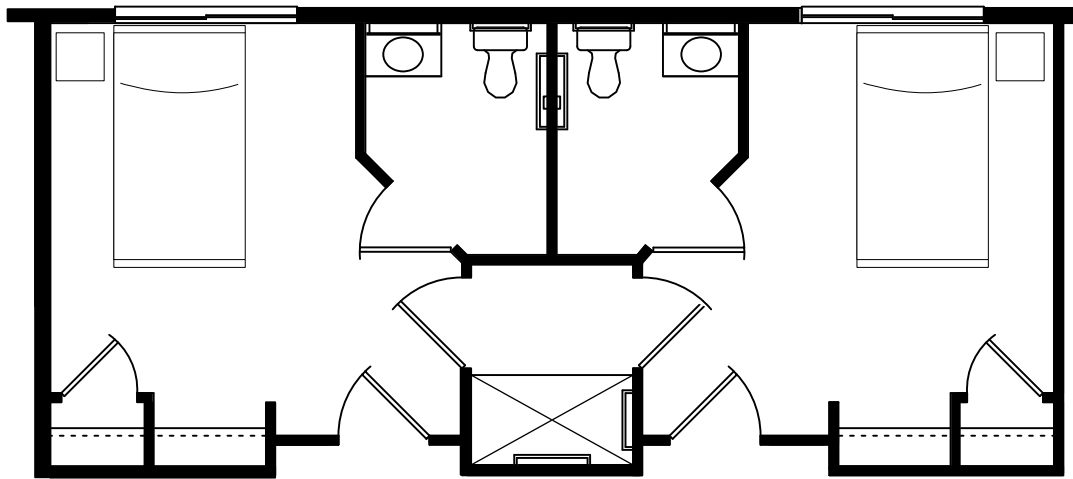
### Suite Type A 392 sq ft



Stone Hearth Estates provides housing and services to qualified individuals without regard to race, sex, age, national origin, religion or disability.



### Memory Care Type 1 257 sq ft

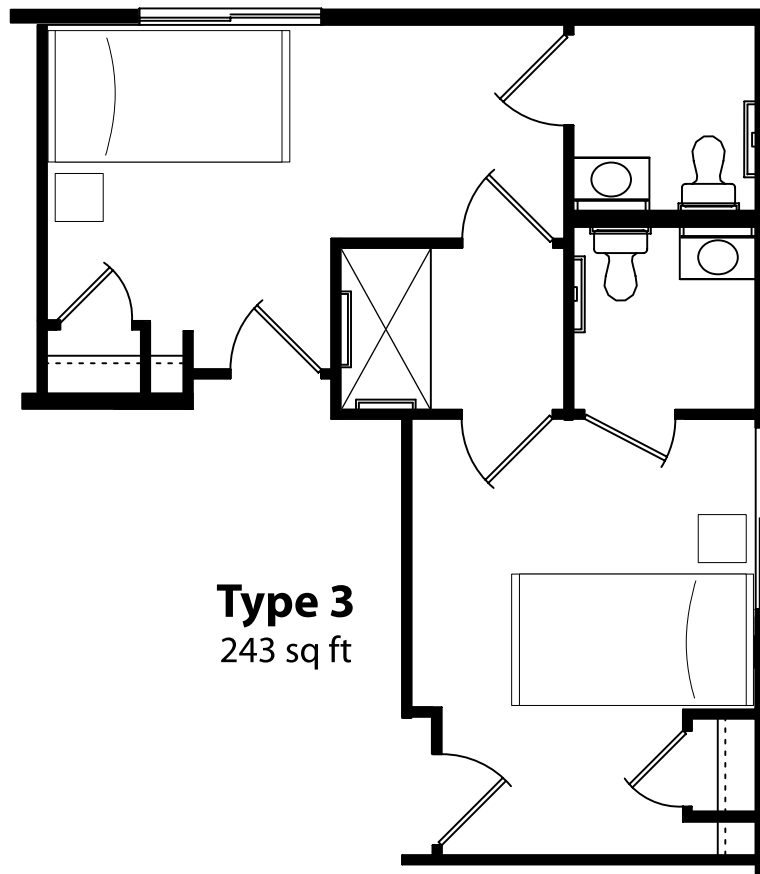


Stone Hearth Estates provides housing and services to qualified individuals without regard to race, sex, age, national origin, religion or disability.



Memory Care

**Type 2**  
238 sq ft



**Type 3**  
243 sq ft



Stone Hearth Estates provides housing and services to qualified individuals without regard to race, sex, age, national origin, religion or disability.

